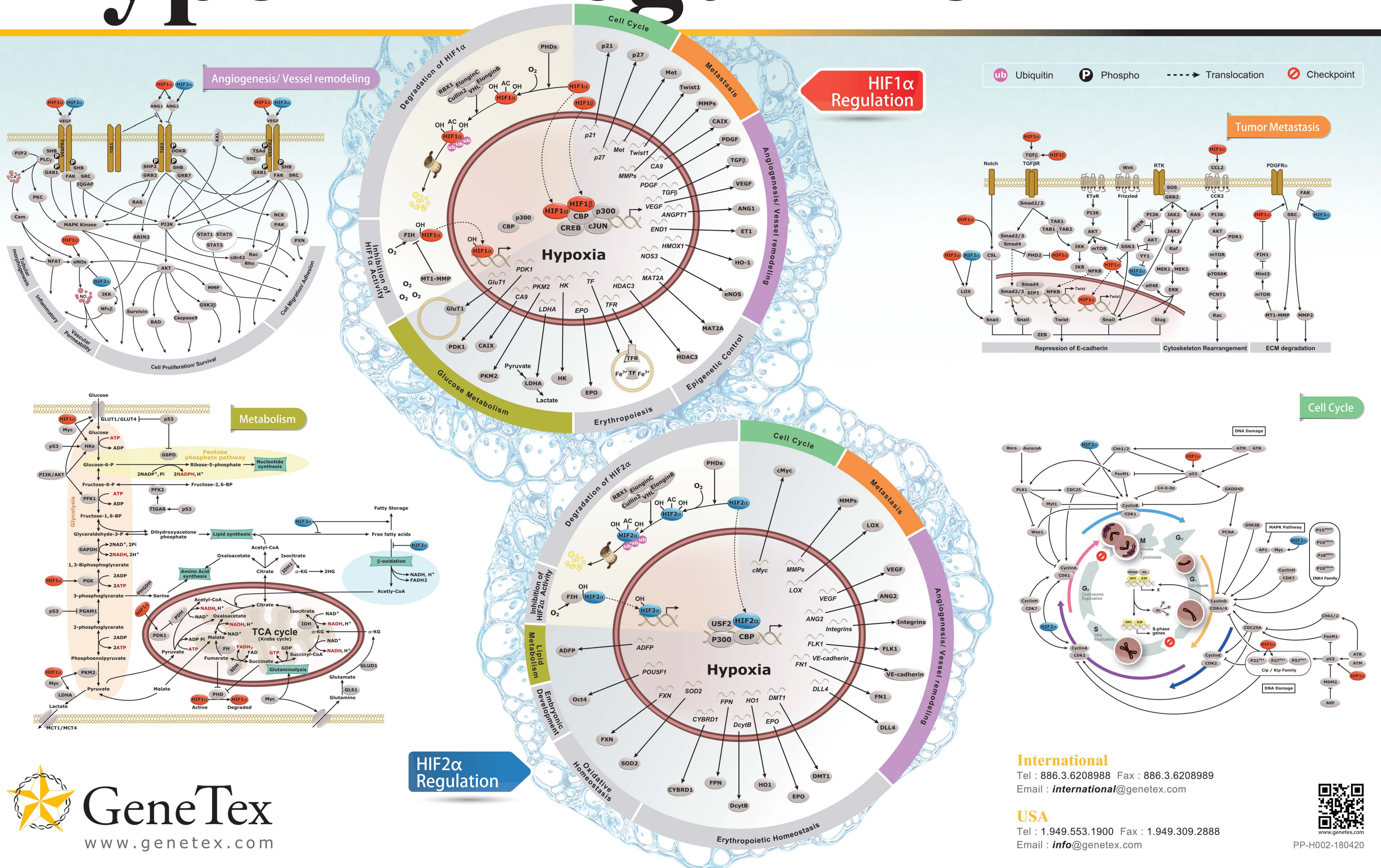


Hypoxia Regulation



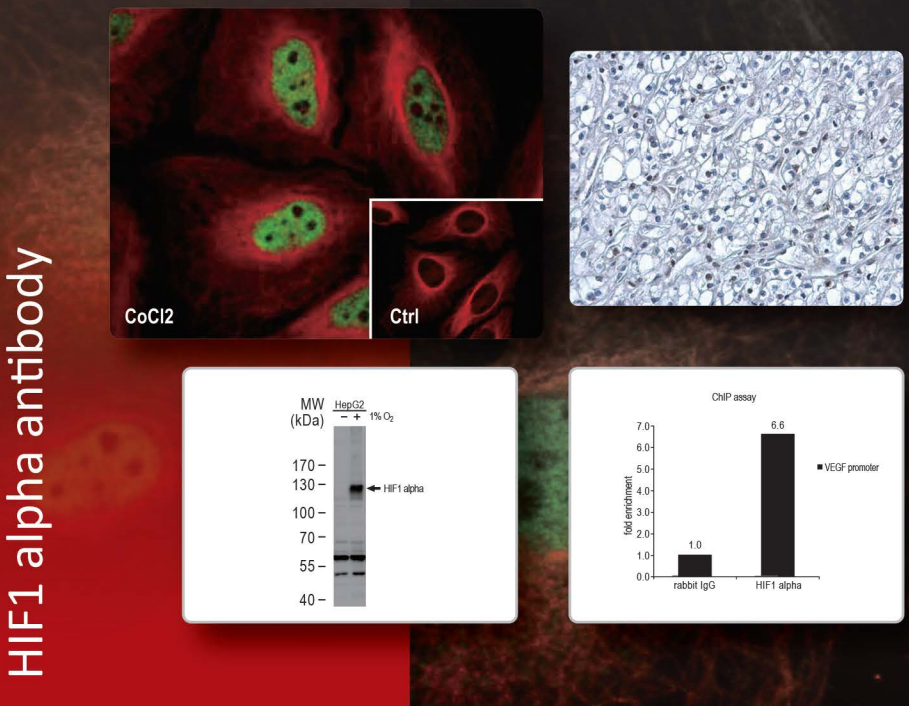
HIF1 alpha antibody

GTX127309

Citation Support	Knockout/Knockdown Validation
Orthogonal Validation	Protein Overexpression
Host / Clonality	Rabbit Polyclonal
Applications	ICC/IF, IHC-Fr, IHC-P, IP, WB, ChIP assay
Species reactivity	Human, Mouse, Rat, Bovine

Representative References

Publication	Reactivity	Application
<i>J Cell Mol Med.</i> 2018 Feb;22(2):1026-1033.	Human	WB
<i>J Tissue Eng Regen Med.</i> 2018 Jan 12.	Rat	ICC/IF
<i>Cancer Res.</i> 2017 Nov 1;77(21):5831-5845.	Human	WB
<i>Oncogene.</i> 2017 Aug;36(31):4405-4414.	Human	WB
<i>J Dairy Sci.</i> 2017 Jun;100(6):4976-4986.	Bovine	IHC-P
<i>Nat Commun.</i> 2017 May 18;8:15308.	Human	WB
<i>Sci Rep.</i> 2016 Jul 1;6:28612.	Human	WB, ChIP assay
<i>EMBO J.</i> 2016 Jan 4;35(1):102-113	Mouse	IHC-Fr



HIF1 alpha antibody

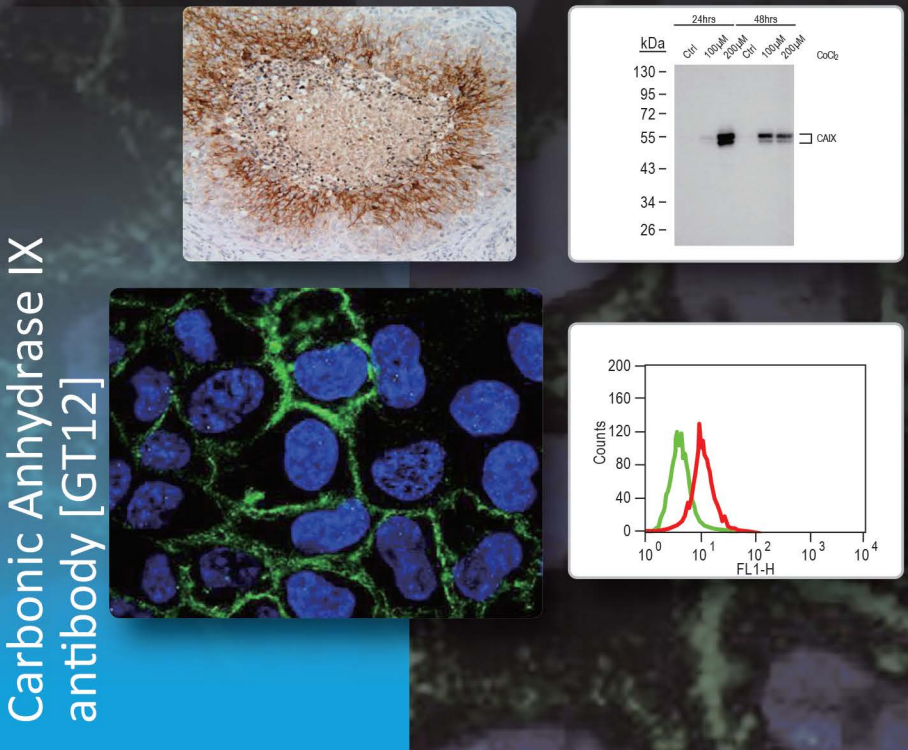
Carbonic Anhydrase IX antibody [GT12]

GTX70020

Citation Support	Orthogonal Validation
Host / Clonality	Mouse Monoclonal
Clone Name	GT12
Applications	FACS, ICC/IF, IHC, IHC-Fr, IHC-P, IP, WB
Species reactivity	Human

Representative References

Publication	Reactivity	Application
<i>Oncol Lett.</i> 2015 Oct;10(4):2192-2196.	Human	WB
<i>PLoS One.</i> 2015 Mar 4;10(3):e0119181.	Human	IHC
<i>PLoS One.</i> 2014 Nov 24;9(11):e113865.	Human	WB
<i>Neoplasia.</i> 2014 Nov 20;16(11):972-81.	Human	IHC-Fr
<i>PNAS.</i> 2013 Jul 23;110(30):12331-6.	Human	IHC
<i>Nat Cell Biol.</i> 2000 Jul;2(7):423-7.	Human	WB



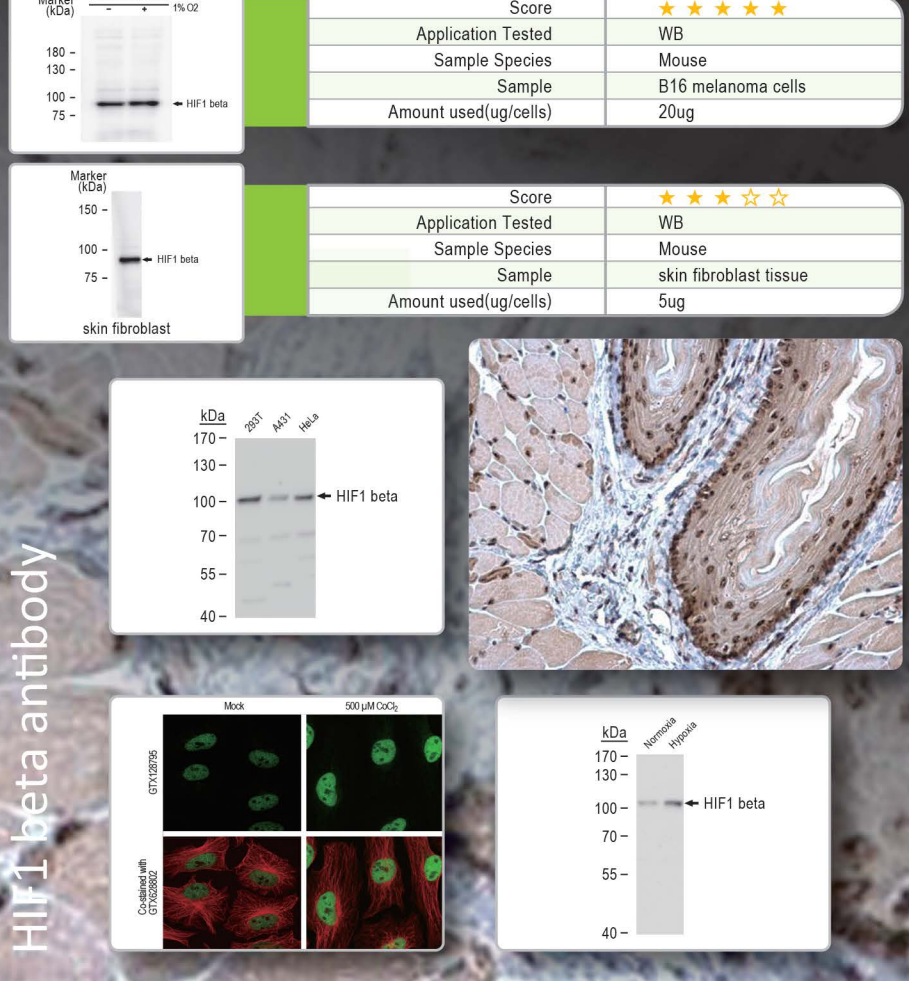
Carbonic Anhydrase IX antibody [GT12]

HIF1 beta antibody

GTX128795

Independent Validation	Orthogonal Validation
Host / Clonality	Rabbit Polyclonal
Applications	ICC/IF, IHC-P, WB
Species reactivity	Human, Mouse

Representative Independent Validations



HIF1 beta antibody

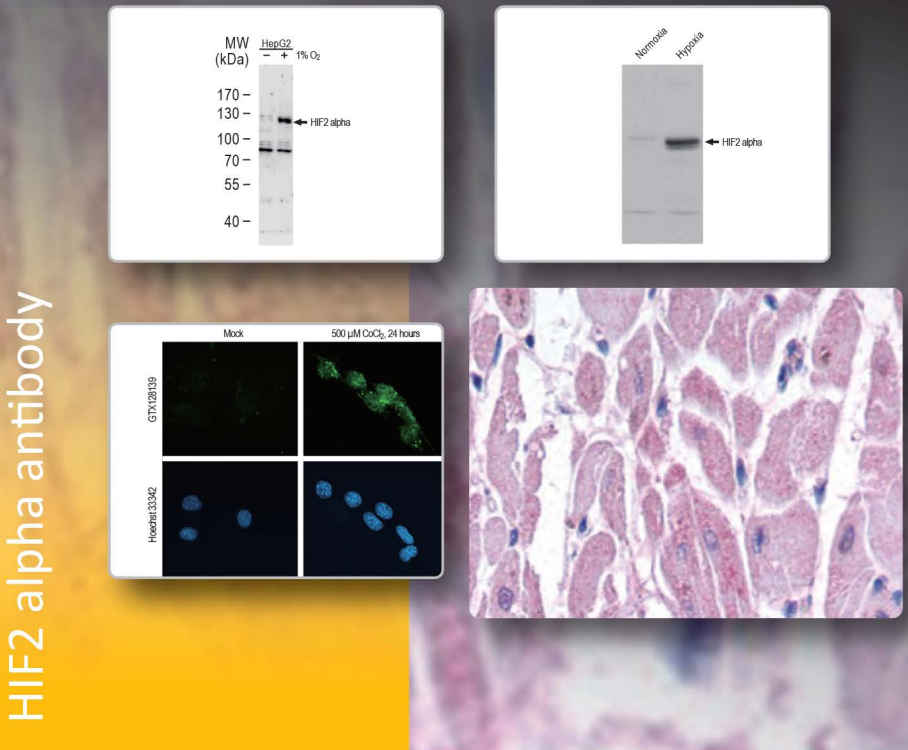
HIF2 alpha antibody

GTX30114

Citation Support	Orthogonal Validation	Protein Overexpression
Host / Clonality	Rabbit Polyclonal	
Applications	ICC/IF, IHC, WB	
Species reactivity	Human, Mouse, Rat, Fish	

Representative References

Publication	Reactivity	Application
<i>Oncol Lett.</i> 2015 Oct;10(4):2192-2196.	Human	WB
<i>PLoS One.</i> 2015 Mar 4;10(3):e0119181.	Human	IHC
<i>PLoS One.</i> 2014 Nov 24;9(11):e113865.	Human	WB
<i>Neoplasia.</i> 2014 Nov 20;16(11):972-81.	Human	IHC-Fr
<i>PNAS.</i> 2013 Jul 23;110(30):12331-6.	Human	IHC

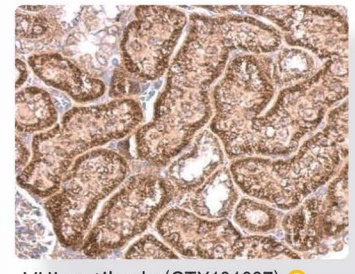


HIF2 alpha antibody

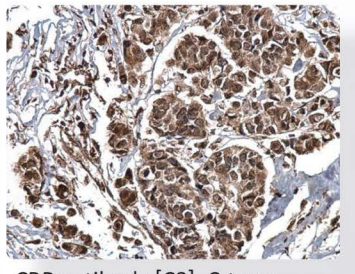
Representative Product List

Citation Support	Knockout/Knockdown Validation
Orthogonal Validation	Protein Overexpression

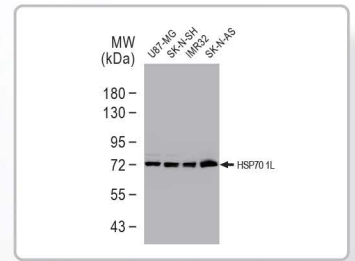
Cat. No.	Product Name	Clonality	Reactivity	Application	Validation
GTX127309	HIF1 alpha antibody	Rb pAb	Hu, Ms, Rat, bovine	ICC/IF, IHC-Fr, IHC-P, IP, WB, ChIP assay	
GTX628480	HIF1 alpha antibody [GT10211]	Ms mAb	Hu	ICC/IF, IHC-P, IP, WB	
GTX128795	HIF1 beta antibody	Rb pAb	Hu, Ms	ICC/IF, IHC-P, WB	
GTX22771	HIF1 beta antibody [2B10]	Ms mAb	Hu, Ms, Rat, Zfsh, Fsh, NHuPm, XI	GSA, ICC/IF, IHC, IHC-Fr, IHC-P, IP, WB	
GTX30114	HIF2 alpha antibody	Rb pAb	Hu, Ms, Rat, Fsh	ICC/IF, IHC, WB	
GTX130988	HIF3 alpha antibody	Rb pAb	Hu	WB	
GTX70020	Carbonic Anhydrase IX antibody [GT12]	Ms mAb	Hu	FACS, ICC/IF, IHC, IHC-Fr, IHC-P, IP, WB	
GTX116251	HIF1AN antibody	Rb pAb	Hu	ICC/IF, IHC-P, WB	
GTX123033	PHD1 antibody	Rb pAb	Hu	ICC/IF, IHC-P, WB	
GTX55745	PHD2 antibody	Rb pAb	Hu, Ms, Rat	ICC/IF, IHC, IHC-P, WB	
GTX111217	PHD3 antibody [N1C3]	Rb pAb	Hu	WB	
GTX116582	PHD4 antibody	Rb pAb	Hu	IHC-P, WB	
GTX101087	Von Hippel Lindau antibody	Rb pAb	Hu, Ms, Rat	ICC/IF, IHC-P, IP, WB	
GTX101249	CBP antibody [C3], C-term	Rb pAb	Hu, Ms, Mlk	ICC/IF, IHC-P, IP, WB, ChIP assay	
GTX111045	HSP70 1L antibody [N1N3]	Rb pAb	Hu, Ms, Rat	ICC/IF, IHC-P, WB	
GTX102255	ORP150 antibody [C2C3], C-term	Rb pAb	Hu, Ms, Rat	ICC/IF, IHC-P, WB	
GTX132304	HIGD1A antibody	Rb pAb	Hu	WB	
GTX116925	SESN2 antibody	Rb pAb	Hu	WB	
GTX100813	EPO antibody	Rb pAb	Hu, Rat	IHC-P, WB	
GTX101147	Heme Oxygenase 1 antibody	Rb pAb	Hu, Ms, Mlk, Rat	ICC/IF, IHC-P, WB	
GTX107977	PKM antibody	Rb pAb	Hu, Ms, Rat	ICC/IF, IHC-P, IP, WB	
GTX33019	ARNT2 antibody	Rb pAb	Hu, Ms, Rat	IHC, IHC-P, WB	
GTX15309	GluT1 antibody	Rb pAb	Hu, Rat	ICC/IF, IHC-P, WB	
GTX128414	AKT(phospho Ser473) antibody	Rb pAb	Hu, Ms	IP, WB	
GTX101416	LDHA antibody	Rb pAb	Hu, Ms, Rat	ICC/IF, IHC-P, WB	



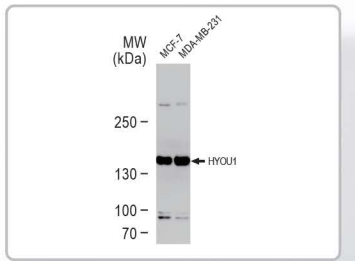
VHL antibody (GTX101087)



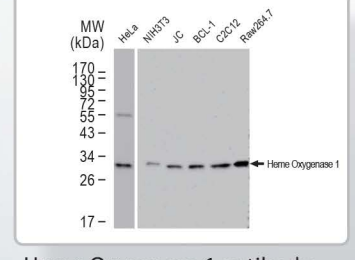
CBP antibody [C3], C-term (GTX101249)



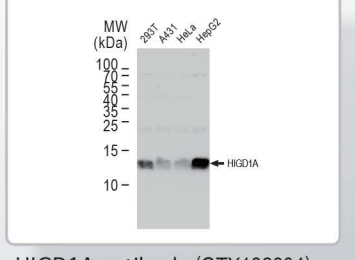
HSP70 1L antibody [N1N3] (GTX111045)



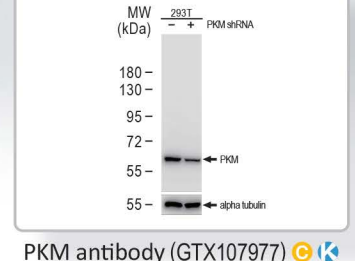
ORP150 antibody [C2C3], C-term (GTX102255)



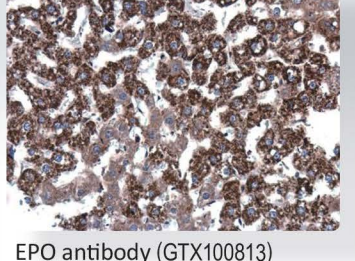
Heme Oxygenase 1 antibody (GTX101147)



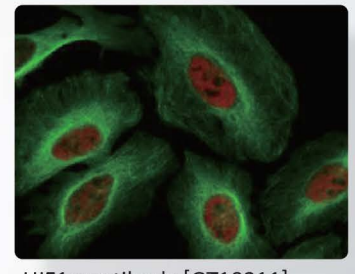
HIGD1A antibody (GTX132304)



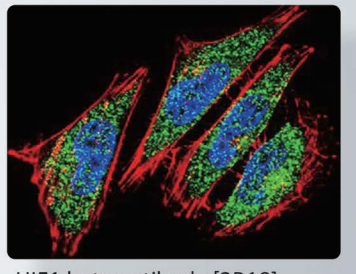
PKM antibody (GTX107977)



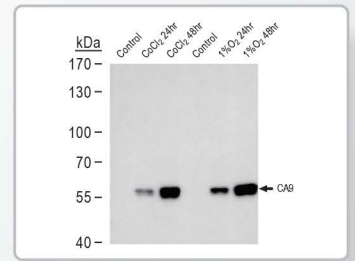
EPO antibody (GTX100813)



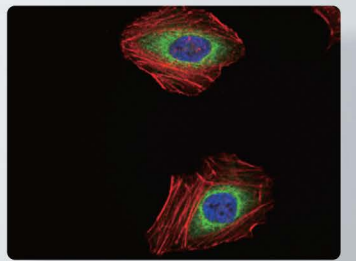
HIF1 alpha antibody [GT10211] (GTX628480)



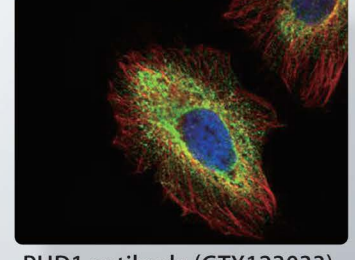
HIF1 beta antibody [2B10] (GTX22771)



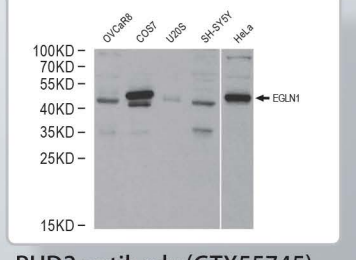
Carbonic Anhydrase IX antibody [GT14212] (GTX629747)



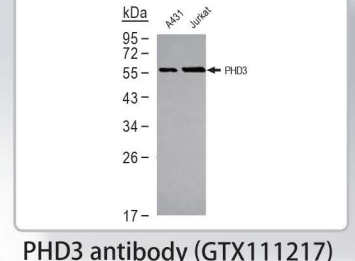
HIF1AN antibody (GTX116251)



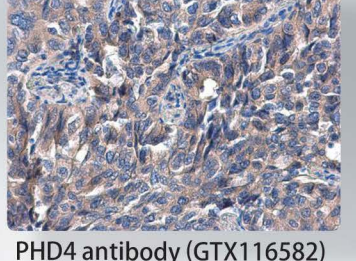
PHD1 antibody (GTX123033)



PHD2 antibody (GTX55745)

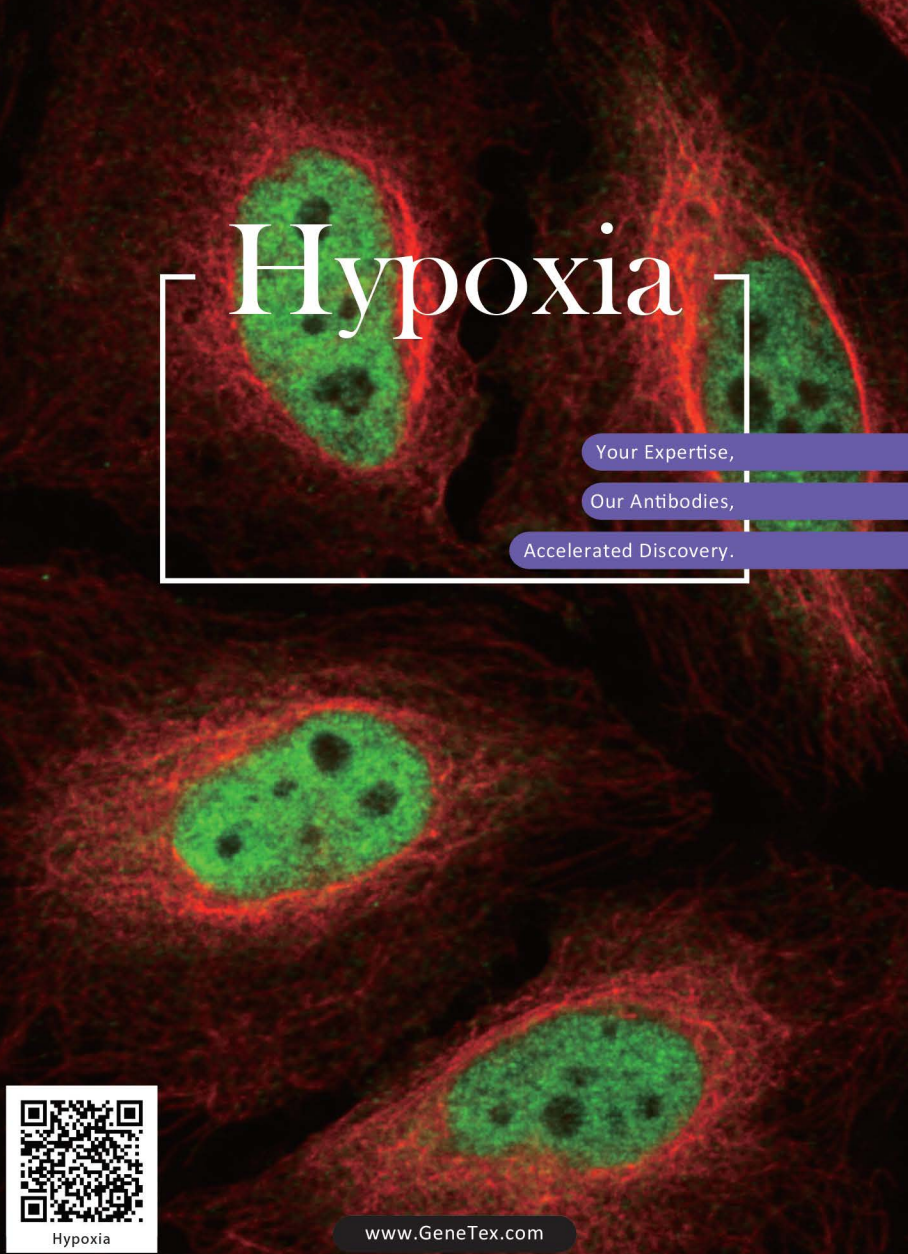


PHD3 antibody (GTX111217)



PHD4 antibody (GTX116582)

Quality Antibodies · Quality Results



Hypoxia

Your Expertise,
Our Antibodies,
Accelerated Discovery.



www.GeneTex.com



International
Tel: 886.3.6208988
Fax: 886.3.6208989
Address: 6F-2, No.89, Dongmei Rd., Hsinchu 300, Taiwan (R.O.C.)
E-mail: international@genetex.com

USA
Toll-free: 1.877.GeneTex (1.877.436.3839)
Fax: 1.949.309.2888
Address: 2456 Alton Parkway, Irvine, CA 92606 USA
E-mail: info@genetex.com